

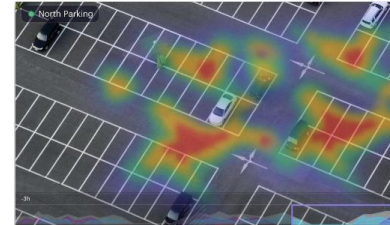
# Malls of the Future



**MOTOROLA** SOLUTIONS

# Shopping Mall Landscape

Challenges we Face or Care About



# Motorola Story

95 Years of Innovation



**1928**

Founding of  
company



**1940**

Introduction of  
Handie-Talkie  
portable two-way  
radio



**1969**

First words  
from  
the moon



**1983**

Introduction of  
DynaTAC 8000X,  
the world's first  
commercial  
portable cellular  
phone



**1995**

World's first  
two-way  
pager



**2012**

World's first  
handheld  
public safety  
LTE device



**2017**

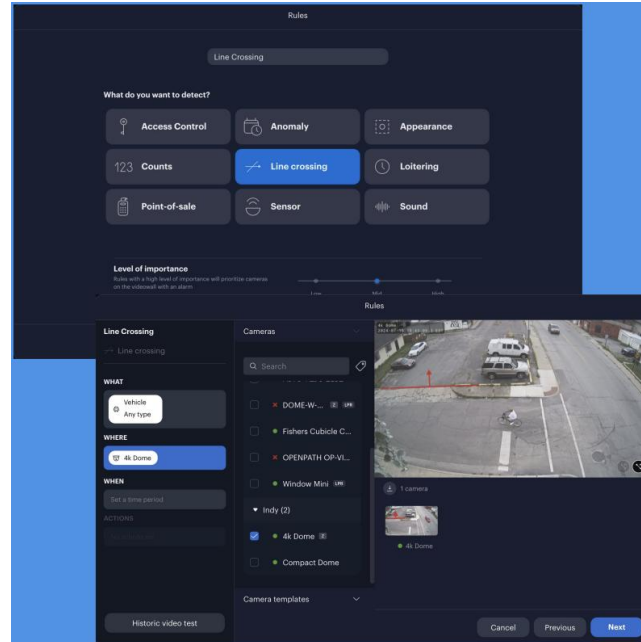
Introduction of  
the end-to-end  
public safety  
software suite,  
CommandCentral





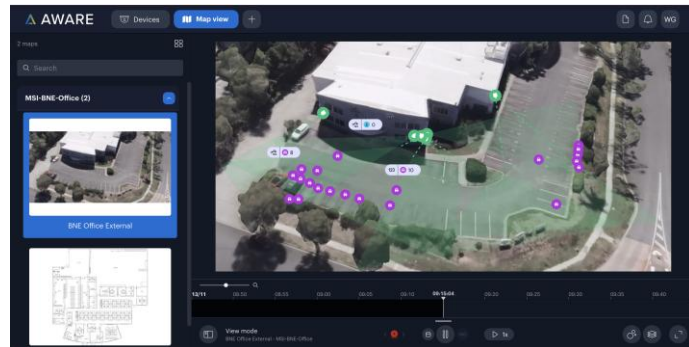
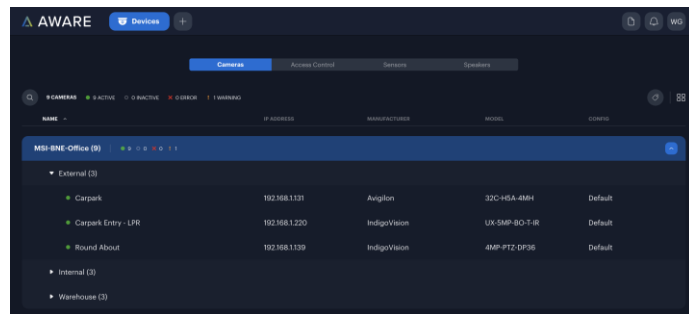
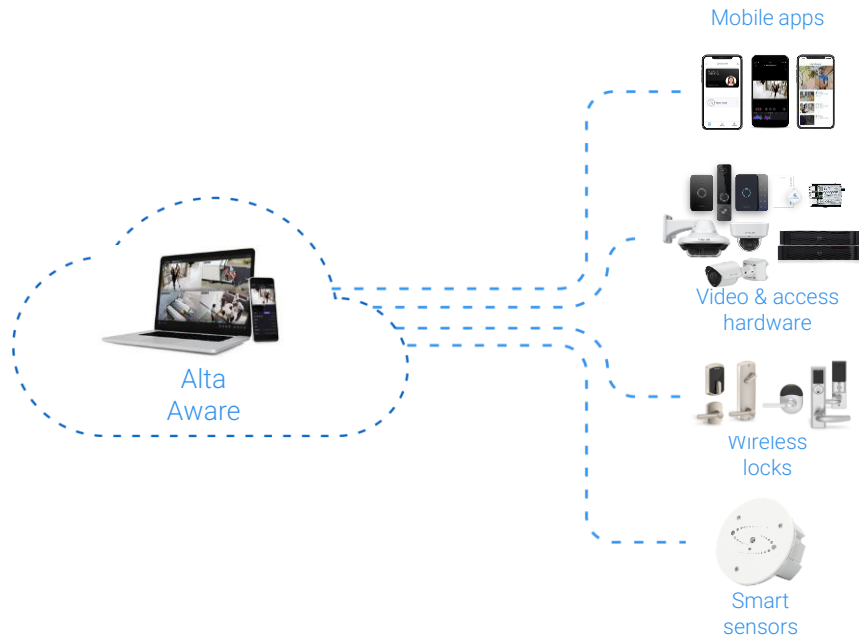
# Motorola Strategy

Acquire and Integrate Best of Breed Open Technologies



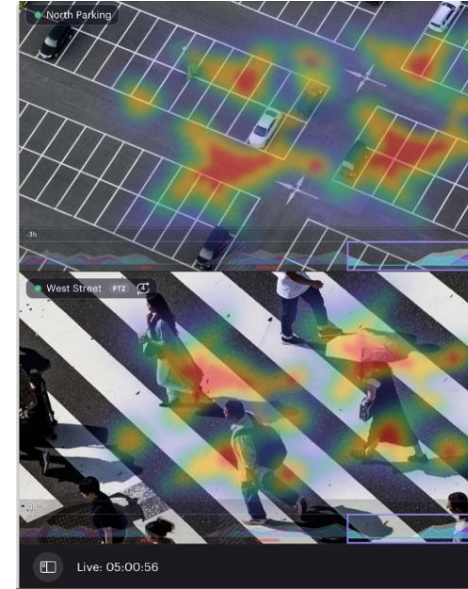
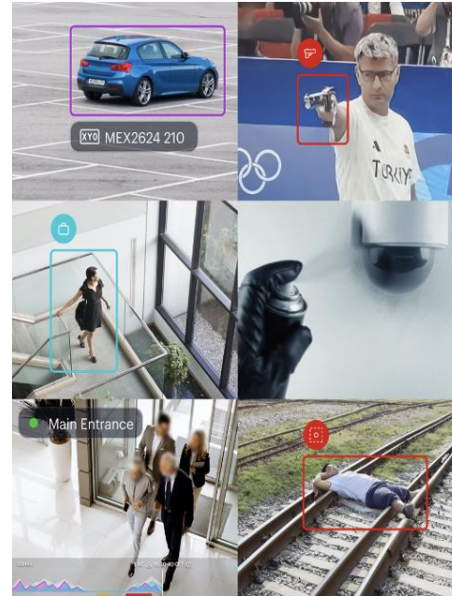
# Cloud First Approach

Anywhere, Anyone, Anytime IOT Devices



# Bridging the Gap

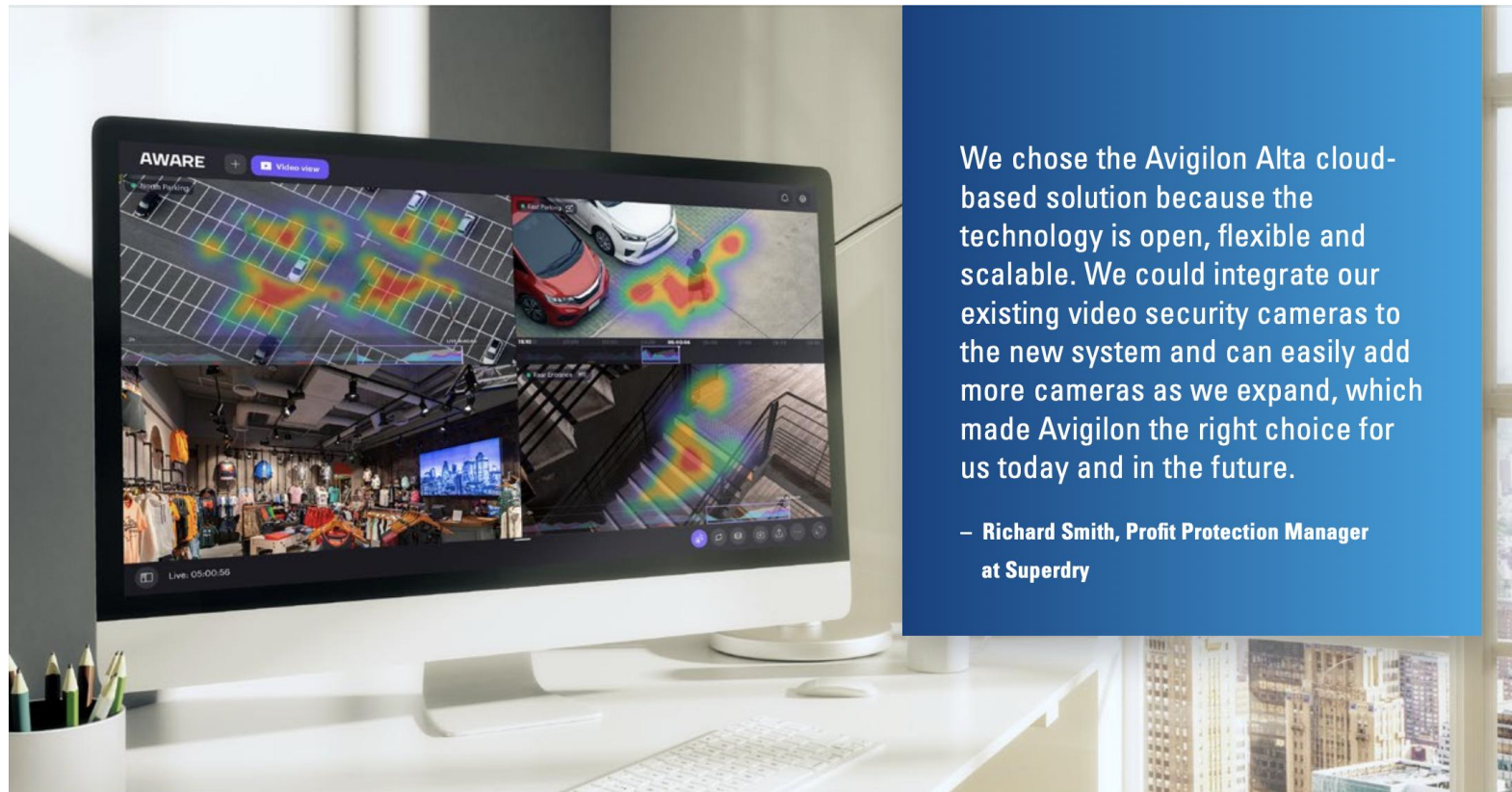
Between the Past and the Future



# Superdry Case Study



Accelerated Journey to Cloud and Advanced Analytics whilst Protecting Current Investment



We chose the Avigilon Alta cloud-based solution because the technology is open, flexible and scalable. We could integrate our existing video security cameras to the new system and can easily add more cameras as we expand, which made Avigilon the right choice for us today and in the future.

– **Richard Smith, Profit Protection Manager**  
at Superdry



The background of the slide features a blue-tinted image of the Chicago skyline, with the Willis Tower being the most prominent building. A large, semi-transparent blue shape with a diagonal line pattern covers the right side of the image. The text "Thank you" is centered in white.

# Thank you